



CAINTON

Change is a perpetual motion

Motor

- Code Rule - p.1
- EC Motor - pp. 2 - 8
- Brushless DC Motor - pp. 9 - 29
- Hybrid Stepper Motor - pp. 30 - 43

Code Rule

Fan Type	Fan inension (mm)		Voltage	Speed	Mold Model
ME: EC Motor	Diameter	Length	V1: 110VAC	HX: Higher than Extreme	-Mold Model
BLMD: Brushless DC Motor			V2: 220VAC	XH: Extremely High	
STM: Hybrid Stepper Motor			V12: 12VDC	HH: Much Higher	
			V24: 24VDC	HR: Higher	
			V48: 48VDC	H: High	
			FV: Full Voltage	M: Medium	
				L: Low	
				LR: Lower	
				LW: Much Lower	
				XL: Extremely Low	
				LX: Lower than Extreme	

EC Motor

Ø59mm

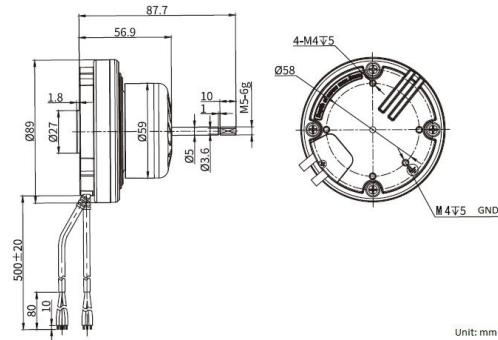
- Protection: IP55
- Insulation: B
- Speed Control: 0-10VDC/PWM
- Certification: CE, RoHS
- Additional functions are optional



● Specification:

Model	Voltage	Frequency	Current	Power	Speed	Maximum Efficiency
	VAC	Hz	Amp	Watt	RPM	%
ME5956V2H-M	230	50/60	0.47	40	3800	65

● Dimension:



EC Motor

Ø72mm

- Protection: IP55
- Insulation: B
- Speed Control: 0-10VDC/PWM
- Certification: CE, RoHS
- Additional functions are optional



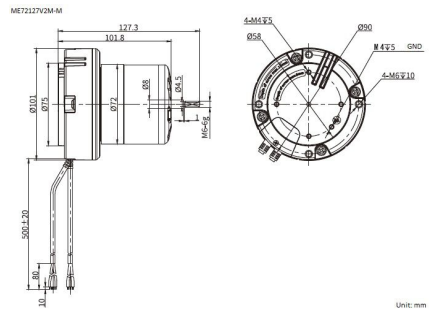
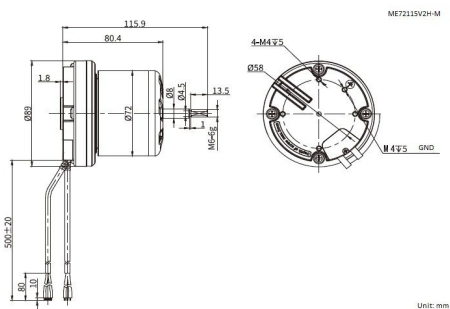
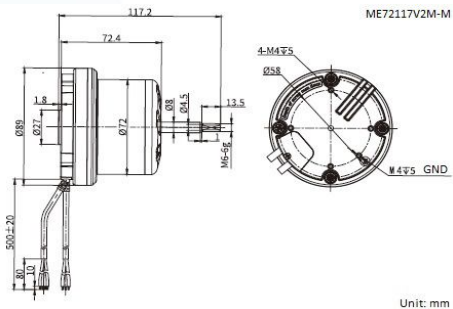
• Specification:

Model	Voltage	Frequency	Current	Power	Speed	Maximum Efficiency
	VAC	Hz	Amp	Watt	RPM	%
ME7272V2M-M	230	50/60	0.65	85	2800	84
ME7280V2H-M	230	50/60	0.9	115	3000	74
ME72101V2M-M	230	50/60	1.12	170	3200	82

EC Motor

Ø72mm

• Dimension:



EC Motor

Ø92mm

- Protection: IP55
- Insulation: B
- Speed Control: 0-10VDC/PWM
- Certification: CE, RoHS
- Additional functions are optional



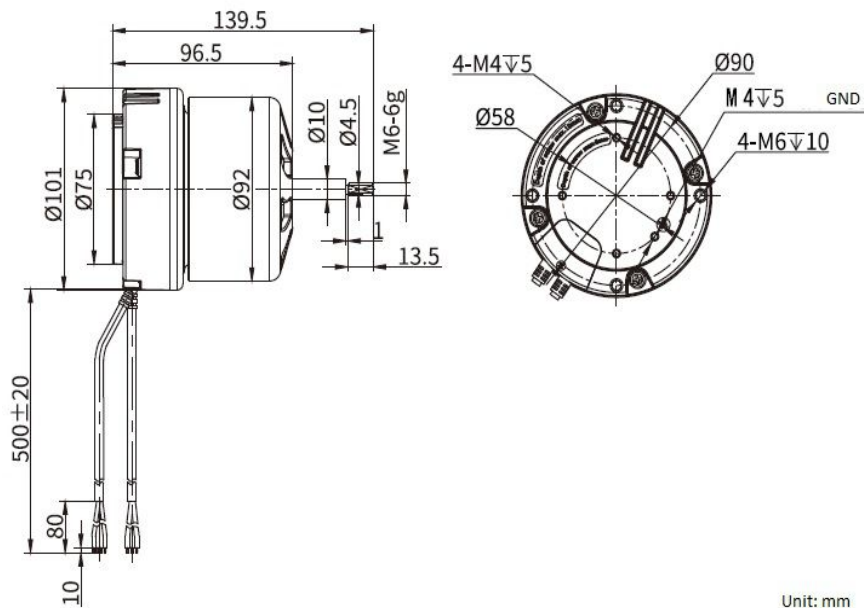
• Specification:

Model	Voltage	Frequency	Current	Power	Speed	Maximum Efficiency
	VAC	Hz	Amp	Watt	RPM	%
ME9296V2M-M	230	50/60	3.6	85	2500	85

EC Motor

Ø92mm

- Dimension:



Unit: mm

EC Motor

Ø102mm

- Protection: IP55
- Insulation: B
- Speed Control: 0-10VDC/PWM
- Certification: CE, RoHS
- Additional functions are optional



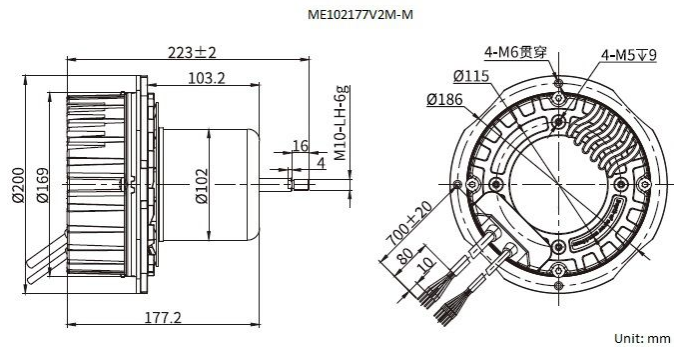
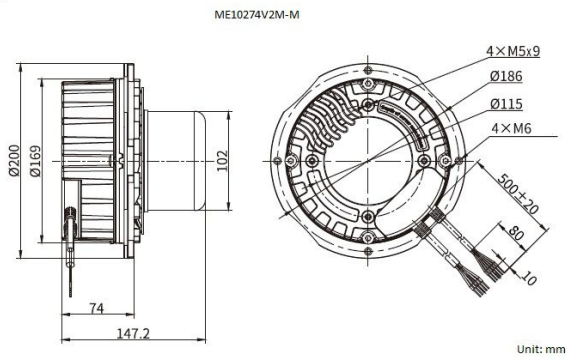
● Specification:

Model	Voltage	Frequency	Current	Power	Speed	Maximum Efficiency
	VAC	Hz	Amp	Watt	RPM	%
ME10274V2M-M	230	50/60	2.3	500	2500	56
ME102177V2M-M	230	50/60	3.5	700	2600	60

EC Motor

Ø102mm

• Dimension:



Brushless DC Motor

Ø16mm



- Description:

Winding Type	Hall Effect Angle	Resistance Accuracy	Inductance Accuracy	Ambient Temperature	Insulation Resistance	Dielectric Strength	Shaft Radial Play	Shaft Axial Play	Insulation Class
Star	120 degree electrical angle	±10% @20°C	±20% @1kHz	-20°C~+50°C	100MΩMin. ,500VDC	500VAC for one minute	0.02Max. (450 g-load)	0.08Max. (450 g-load)	Class B

Brushless DC Motor

Ø16mm



- Specification:

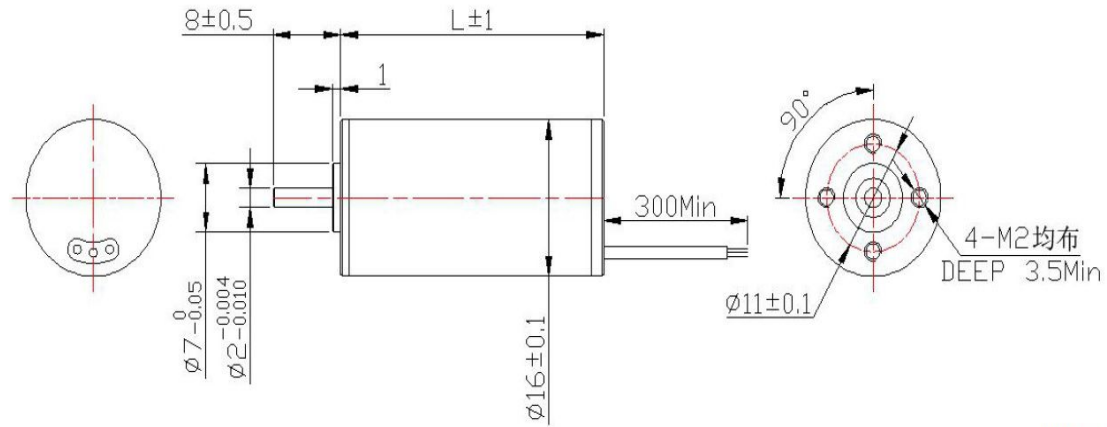
Model	Rated Voltage	Poles	Phase	Length	No-Load Current	Rated Current	Peak Current	Rated Power	No-Load Speed	Rated Speed
	VDC			mm	Amp	Amp	Amp	Watt	RPM	RPM
BLMD1628V12H-ST	12	2	3	28	0.3	0.47	1.4	3.7	27000	22000
BLMD1640V24H-ST	24	2	3	40	0.3	0.63	1.9	10	30000	25000
BLMD1656V24H-ST	24	2	3	56	0.3	1.33	4	24	30000	25000

Model	Rated Torque	Peak Torque	Torque Constant	Maximum Efficiency	Line to Line Resistance	Line to Line Inductance	Back E.M.F	Rotor Inertia	Weight
	mN.m	mN.m	mN.m/A	%	ohm	mH	Vrms/KRPM	g.cm2	g
BLMD1628V12H-ST	1.6	4.8	3.4	68	5.4	0.71	0.31	0.4	29
BLMD1640V24H-ST	4	12	6.3	70	6.6	0.21	0.56	0.66	42
BLMD1656V24H-ST	9	27	6.8	76	3.15	0.15	0.56	1.02	64

Brushless DC Motor

Ø16mm

- Dimension:



Unit: mm

Brushless DC Motor

Ø42mm



- Description:

Winding Type	Hall Effect Angle	Resistance Accuracy	Inductance Accuracy	Ambient Temperature	Insulation Resistance	Dielectric Strength	Shaft Radial Play	Shaft Axial Play	Insulation Class
Delta	120 degree electrical angle	±10% @20°C	±20% @1kHz	-20°C~+50°C	100MΩMin. ,500VDC	500VAC for one minute	0.02Max. (450 g-load)	0.08Max. (450 g-load)	Class B

Brushless DC Motor

Ø42mm



• Specification:

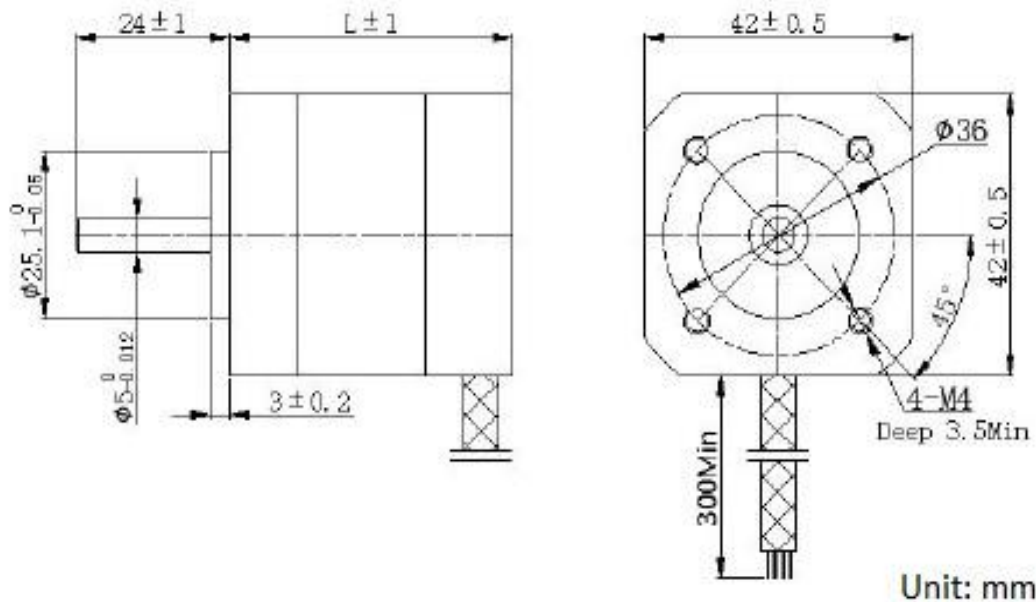
Model	Rated Voltage	Poles	Phase	Length	No-Load Current	Rated Current	Peak Current	Rated Power	No-Load Speed	Rated Speed
	VDC			mm	Amp	Amp	Amp	Watt	RPM	RPM
BLMD4240V24H-ST	24	8	3	40	0.3	1.84	5.52	26	6500	4000
BLMD4260V24M-ST	24	8	3	60	0.5	3.2	9.6	82	5800	4000
BLMD4280V24M-ST	24	8	3	80	0.5	5.25	15.75	88	5700	4000

Model	Rated Torque	Peak Torque	Torque Constant	Maximum Efficiency	Line to Line Resistance	Line to Line Inductance	Back E.M.F	Rotor Inertia	Weight
	mN.m	mN.m	mN.m/A	%	ohm	mH	Vrms/KRPM	g.cm2	kg
BLMD4240V24H-ST	0.0625	0.19	0.034	70	1.45	2	2.61	24	0.3
BLMD4260V24M-ST	0.125	0.38	0.039	73	0.7	1.06	2.9	48	0.45
BLMD4280V24M-ST	0.21	0.63	0.04	73	0.45	0.75	3	72	0.65

Brushless DC Motor

Ø42mm

- Dimension:



Brushless DC Motor

Ø57mm



- Description:

Winding Type	Hall Effect Angle	Resistance Accuracy	Inductance Accuracy	Ambient Temperature	Insulation Resistance	Dielectric Strength	Shaft Radial Play	Shaft Axial Play	Insulation Class
Delta	120 degree electrical angle	±10% @20°C	±20% @1kHz	-20°C~+50°C	100MΩMin. .500VDC	500VAC for one minute	0.02Max. (450 g-load)	0.08Max. (450 g-load)	Class B

Brushless DC Motor

Ø57mm



• Specification:

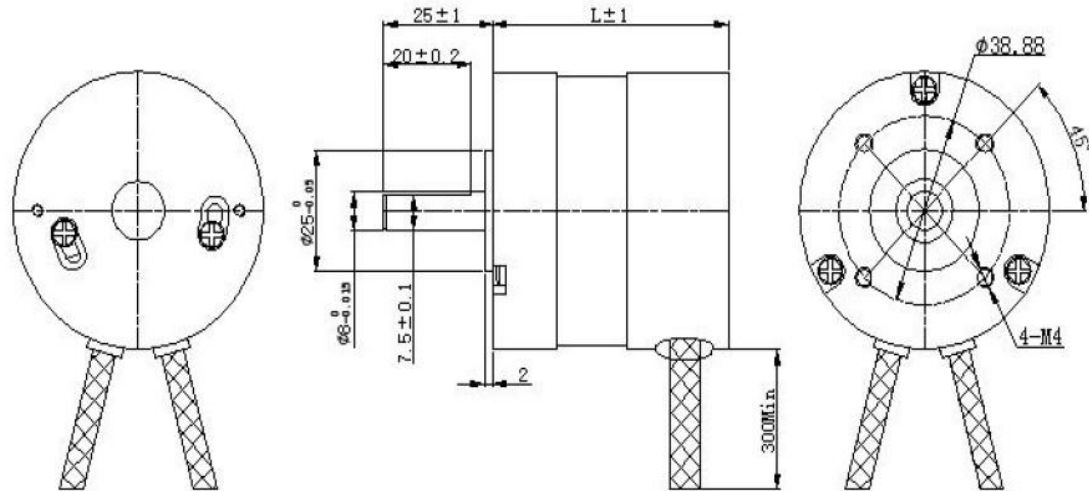
Model	Rated Voltage	Poles	Phase	Length	No-Load Current	Rated Current	Peak Current	Rated Power	No-Load Speed	Rated Speed
	VDC			mm	Amp	Amp	Amp	Watt	RPM	RPM
BLMD5753V36H-ST	36	4	3	53.6	0.3	1.9	5.7	50	5400	4000
BLMD5773V36H-ST	36	4	3	73.6	0.3	3.7	11	100	5300	4000
BLMD5793V36H-ST	36	4	3	93.6	0.5	5.5	16.5	150	5300	4000
BLMD57113V36H-ST	36	4	3	113.6	0.5	6.8	20.4	200	4800	4000

Model	Rated Torque	Peak Torque	Torque Constant	Maximum Efficiency	Line to Line Resistance	Line to Line Inductance	Back E.M.F	Rotor Inertia	Weight
	mN.m	mN.m	mN.m/A	%	ohm	mH	Vrms/KRPM	g.cm ²	kg
BLMD5753V36H-ST	0.12	0.36	0.064	78	1.44	3.5	4.7	75	0.44
BLMD5773V36H-ST	0.24	0.72	0.065	82	0.68	1.9	4.8	119	0.72
BLMD5793V36H-ST	0.36	1.08	0.065	82	0.41	1.2	4.8	173	0.95
BLMD57113V36H-ST	0.48	1.44	0.07	82	0.38	1.1	5.2	113.6	1.2

Brushless DC Motor

Ø57mm

- Dimension:



Unit: mm

Brushless DC Motor

Ø60mm



- Description:

Winding Type	Hall Effect Angle	Resistance Accuracy	Inductance Accuracy	Ambient Temperature	Insulation Resistance	Dielectric Strength	Shaft Radial Play	Shaft Axial Play	Insulation Class
Delta	120 degree electrical angle	±10% @20°C	±20% @1kHz	-20°C~+50°C	100MΩMin. ,500VDC	500VAC for one minute	0.02Max. (450 g-load)	0.08Max. (450 g-load)	Class B

Brushless DC Motor

Ø60mm



• Specification:

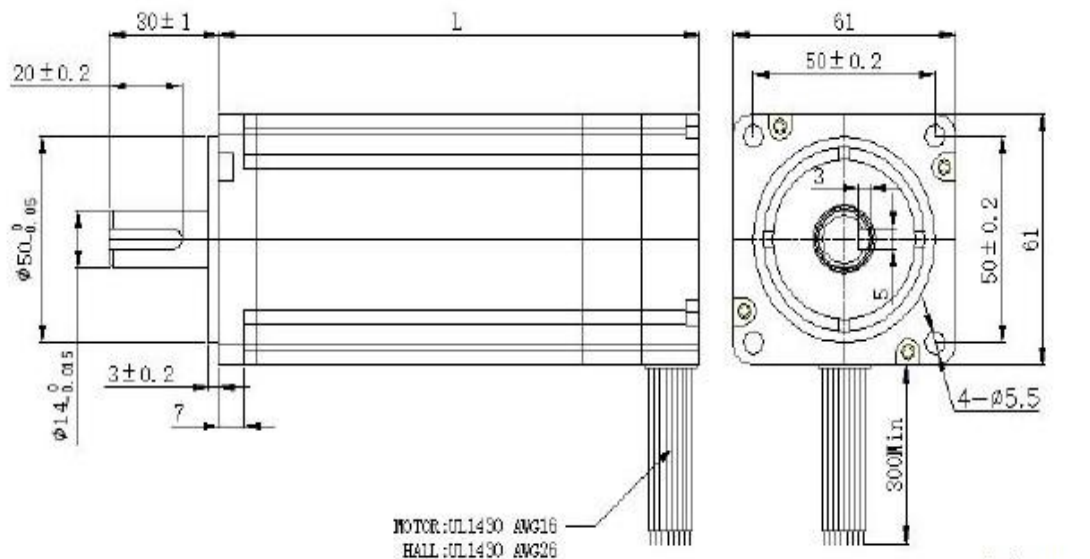
Model	Rated Voltage	Poles	Phase	Length	No-Load Current	Rated Current	Peak Current	Rated Power	No-Load Speed	Rated Speed
	VDC			mm	Amp	Amp	Amp	Watt	RPM	RPM
BLMD6072V48H-ST	48	8	3	72	0.5	2.7	8.1	100	3800	3000
BLMD6092V48H-ST	48	8	3	92	0.5	5.4	16.2	200	3800	3000
BLMD60112V48H-ST	48	8	3	112	0.5	7.5	22.5	300	3600	3000
BLMD60132V48H-ST	48	8	3	132	0.5	10	30	400	3600	3000

Model	Rated Torque	Peak Torque	Torque Constant	Maximum Efficiency	Line to Line Resistance	Line to Line Inductance	Back E.M.F	Rotor Inertia	Weight
	mN.m	mN.m	mN.m/A	%	ohm	mH	Vrms/KRPM	g.cm ²	kg
BLMD6072V48H-ST	0.32	0.96	0.12	83	1.44	3.5	8.93	260	0.85
BLMD6092V48H-ST	0.64	1.92	0.12	86	0.68	1.9	8.93	450	1.25
BLMD60112V48H-ST	0.96	2.88	0.127	86	0.41	1.2	9.43	640	1.65
BLMD60132V48H-ST	1.28	3.84	0.127	89	0.38	1.1	9.43	830	2.05

Brushless DC Motor

Ø60mm

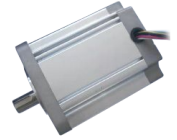
- Dimension:



Unit: mm

Brushless DC Motor

Ø80mm



- Description:

Winding Type	Hall Effect Angle	Resistance Accuracy	Inductance Accuracy	Ambient Temperature	Insulation Resistance	Dielectric Strength	Shaft Radial Play	Shaft Axial Play	Insulation Class
Delta	120 degree electrical angle	±10% @20°C	±20% @1kHz	-20°C~+50°C	100MΩMin. ,500VDC	500VAC for one minute	0.02Max. (450 g-load)	0.08Max. (450 g-load)	Class B

Brushless DC Motor

Ø80mm



• Specificationn:

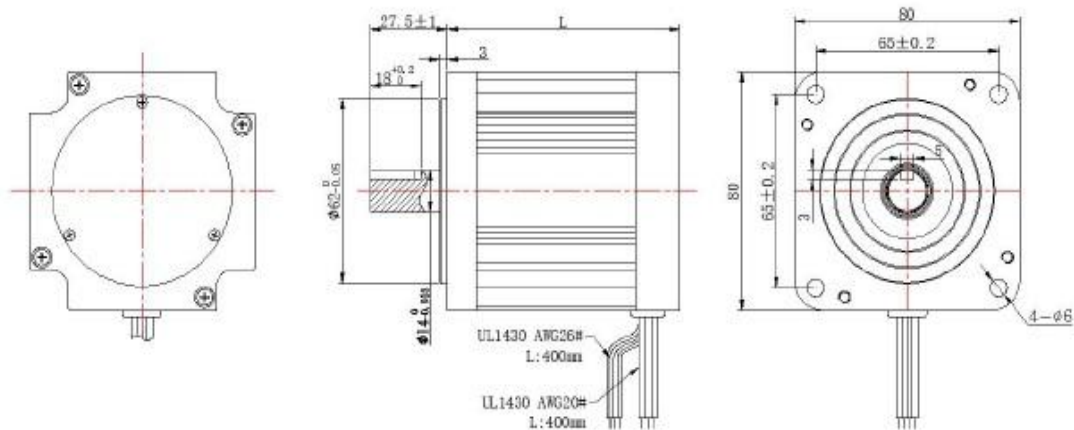
Model	Rated Voltage	Poles	Phase	Length	No-Load Current	Rated Current	Peak Current	Rated Power	No-Load Speed	Rated Speed
	VDC			mm	Amp	Amp	Amp	Watt	RPM	RPM
BLMD80102V48M-ST	48	4	3	102.5	0.5	8.7	26	315	4000	3000
BLMD80102V310H-ST	310	4	3	102.5	0.5	2.16	6.48	500	4000	6000
BLMD80142V310H-ST	310	4	3	142.5	0.5	4.32	12.96	1000	8000	6000

Model	Rated Torque	Peak Torque	Torque Constant	Maximum Efficiency	Back E.M.F	Rotor Inertia	Weight
	mN.m	mN.m	mN.m/A	%	Vrms/KRPM	g.cm2	kg
BLMD80102V48M-ST	1	3	0.115	76	8.5	420	1.9
BLMD80102V310H-ST	0.8	2.4	0.37	78	27.4	420	1.9
BLMD80142V310H-ST	1.6	4.8	0.37	78	27.4	840	1.9

Brushless DC Motor

Ø80mm

- Dimension:



Unit: mm

Brushless DC Motor

Ø86mm



- Description:

Winding Type	Hall Effect Angle	Resistance Accuracy	Inductance Accuracy	Ambient Temperature	Insulation Resistance	Dielectric Strength	Shaft Radial Play	Shaft Axial Play	Insulation Class
Delta	120 degree electrical angle	±10% @20°C	±20% @1kHz	-20°C~+50°C	100MΩMin. ,500VDC	1800VAC for one minute	0.02Max. (450 g-load)	0.08Max. (450 g-load)	Class B

Brushless DC Motor

Ø86mm



• Specificationn:

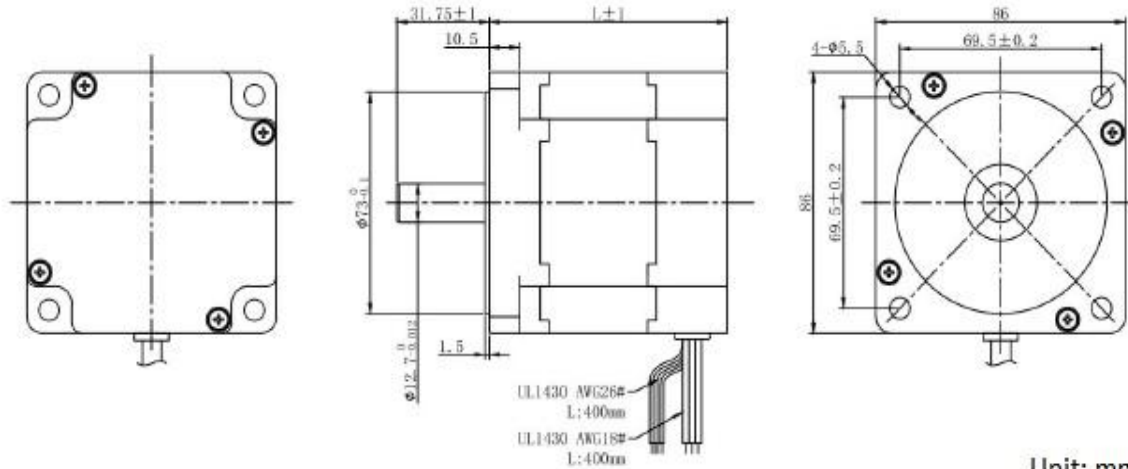
Model	Rated Voltage	Poles	Phase	Length	No-Load Current	Rated Current	Peak Current	Rated Power	No-Load Speed	Rated Speed
	VDC			mm	Amp	Amp	Amp	Watt	RPM	RPM
BLMD8682V48M-ST	48	8	3	82	<0.8	10.8	32.4	440	3500	3000
BLMD86122V48M-ST	48	8	3	122	<1.3	18.9	57	800	3500	3000

Model	Rated Torque	Peak Torque	Torque Constant	Maximum Efficiency	Back E.M.F	Rotor Inertia	Weight
	mN.m	mN.m	mN.m/A	%	Vrms/KRPM	g.cm2	kg
BLMD8682V48M-ST	1.4	4.2	0.13	85	9.7	800	2.4
BLMD86122V48M-ST	2.5	7.5	0.136	85	9.7	1600	4.5

Brushless DC Motor

Ø86mm

- Dimension:



Unit: mm

Brushless DC Motor

Ø110mm



- Description:

Winding Type	Hall Effect Angle	Resistance Accuracy	Inductance Accuracy	Ambient Temperature	Insulation Resistance	Dielectric Strength	Shaft Radial Play	Shaft Axial Play	Insulation Class
Delta	120 degree electrical angle	±10% @20°C	±20% @1kHz	-20°C~+50°C	100MΩMin. ,500VDC	1800VAC for one minute	0.02Max. (450 g-load)	0.08Max. (450 g-load)	Class B

Brushless DC Motor

Ø110mm



- Description:

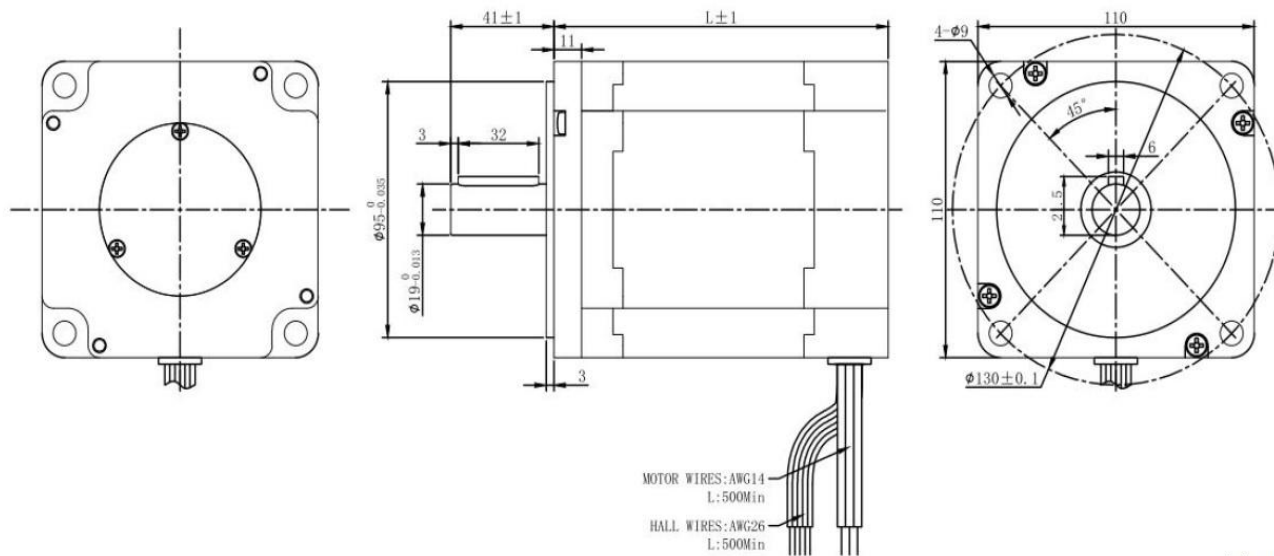
Model	Rated Voltage	Poles	Phase	Length	No-Load Current	Rated Current	Peak Current	Rated Power	No-Load Speed	Rated Speed
	VDC			mm	Amp	Amp	Amp	Watt	RPM	RPM
BLMD11093V60M-ST	60	8	3	93	<0.9	13	39	700	3500	3000
BLMD110133V60M-ST	60	8	3	133	<2	26	78	1400	3400	3000

Model	Rated Torque	Peak Torque	Torque Constant	Maximum Efficiency	Back E.M.F	Rotor Inertia	Weight
	mN.m	mN.m	mN.m/A	%	Vrms/KRPM	g.cm ²	kg
BLMD11093V60M-ST	2.2	6.6	0.17	89	12.2	3460	4.7
BLMD110133V60M-ST	4.5	13.5	0.173	89	12.5	6900	8.54

Brushless DC Motor

Ø110mm

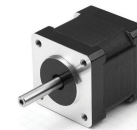
- Dimension:



Unit: mm

Hybrid Stepper Motor

Ø35mm



Description:

Step Angle	Step Angle Accuracy	Resistance Accuracy	Inductance Accuracy	Temperature Rise	Ambient Temperature	Insulation Resistance	Dielectric Strength	Shaft Radial Play	Shaft Axial Play
0.9°	±5% (full step, no load)	±10% @20°C	±20% @1kHz	80°C Max. (rated current)	-20°C~+50°C	100MΩMin. .500VDC	500VAC for one minute	0.02Max. (450 g-load)	0.08Max. (450 g-load)

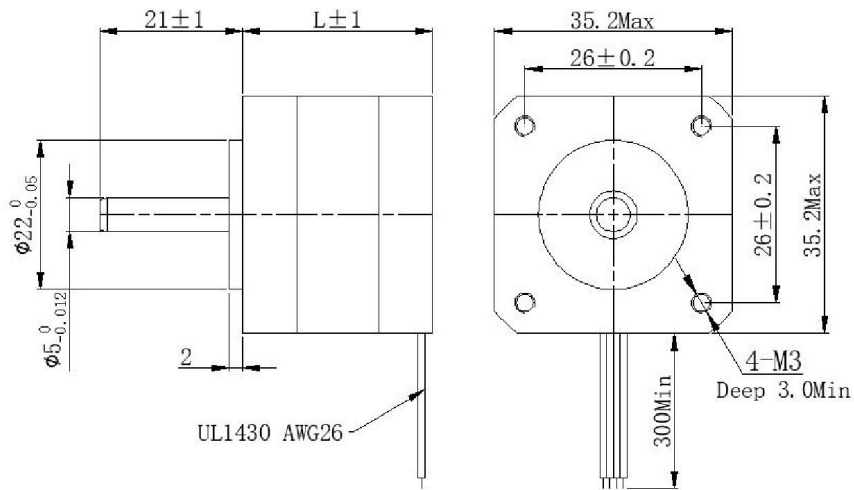
Specification:

Model	Rated Voltage	Current	Resistance	Induction	Holding Torque	Number of Lead	Rotor Inertia	Weight	Length
	V	A	Ω	mH	g. cm		g-cm2	Kg	mm
STM3520V3.5-ST	3.5	0.35	10	6.5	500	4	8	0.1	20
STM3528V5.8-ST	5.88	0.35	16.8	12	1000	4	10	0.14	28
STM3536V2.7-ST	2.7	1	2.7	7.5	1200	4	14	0.18	36

Hybrid Stepper Motor

Ø35mm

• Dimension:

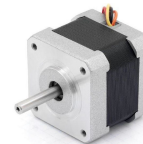


• Wiring:



Hybrid Stepper Motor

Ø39mm



Description:

Step Angle	Step Angle Accuracy	Resistance Accuracy	Inductance Accuracy	Temperature Rise	Ambient Temperature	Insulation Resistance	Dielectric Strength	Shaft Radial Play	Shaft Axial Play
0.9°	±5% (full step, no load)	±10% @20°C	±20% @1kHz	80°C Max. (rated current)	-20°C~+50°C	100MΩMin. .500VDC	500VAC for one minute	0.02Max. (450 g-load)	0.08Max. (450 g-load)

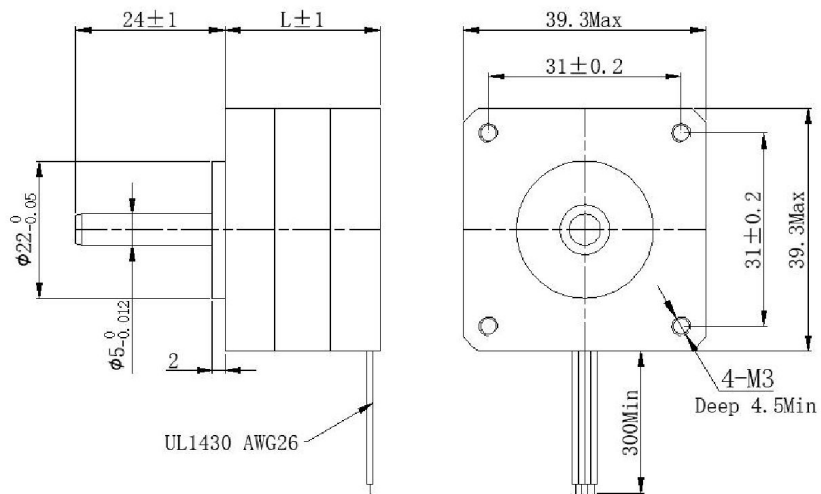
Specification:

Model	Rated Voltage	Current	Resistance	Induction	Holding Torque	Number of Lead	Rotor Inertia	Weight	Length
	V	A	Ω	mH	g. cm		g-cm2	Kg	mm
STM3920V4-ST	4	0.5	8	9.5	900	4	10	0.1	20
STM3925V5-ST	5	0.5	10	15.5	1200	4	11	0.12	25
STM3934V12-ST	12	0.4	30	43	1800	4	20	0.18	34
STM3938V12-ST	12	0.5	24	60	2600	4	28	0.2	38

Hybrid Stepper Motor

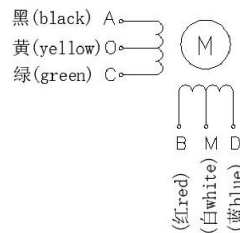
Ø39mm

• Dimension:

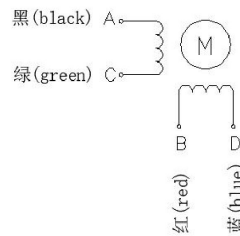


• Wiring:

6线 (6 leads)



4线 (4 leads)



Hybrid Stepper Motor

Ø42mm



Description:

Step Angle	Step Angle Accuracy	Resistance Accuracy	Inductance Accuracy	Temperature Rise	Ambient Temperature	Insulation Resistance	Dielectric Strength	Shaft Radial Play	Shaft Axial Play
0.9°	±5% (full step, no load)	±10% @20°C	±20% @1kHz	80°C Max. (rated current)	-20°C~+50°C	100MΩMin. .500VDC	500VAC for one minute	0.02Max. (450 g-load)	0.08Max. (450 g-load)

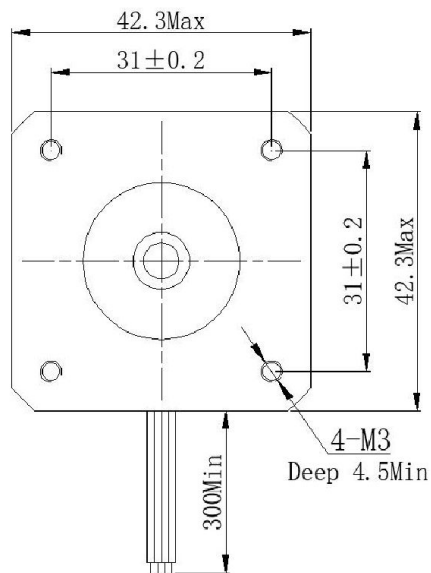
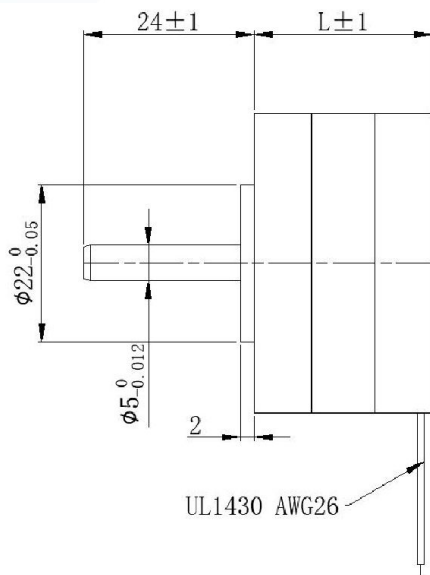
Specification:

Model	Rated Voltage	Current	Resistance	Induction	Holding Torque	Number of Lead	Rotor Inertia	Weight	Length
	V	A	Ω	mH	g. cm		g-cm2	Kg	mm
STM4234V2.8-ST	2.8	1.33	2.1	4.2	2200	4	35	0.22	34
STM4240V4-ST	4	1.2	3.3	4	2500	6	54	0.28	40
STM4240V2.8-ST	2.8	1.68	1.65	3.2	3300	4	54	0.28	40
STM4247V4-ST	4	1.2	3.3	4	3100	6	68	0.35	47
ST4247V2.8-ST	2.8	1.68	1.65	4.1	4400	4	68	0.35	47

Hybrid Stepper Motor

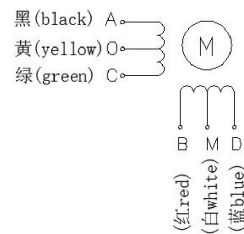
Ø42mm

• Dimension:

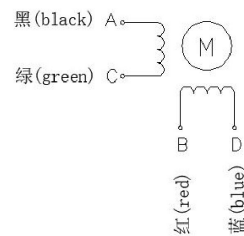


• Wiring:

6线 (6 leads)

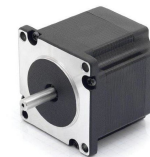


4线 (4 leads)



Hybrid Stepper Motor

Ø57mm



- Description:

Step Angle	Step Angle Accuracy	Resistance Accuracy	Inductance Accuracy	Temperature Rise	Ambient Temperature	Insulation Resistance	Dielectric Strength	Shaft Radial Play	Shaft Axial Play
0.9°	±5% (full step, no load)	±10% @20°C	±20% @1kHz	80°C Max. (rated current)	-20°C~+50°C	100MΩMin. ,500VDC	500VAC for one minute	0.02Max. (450 g-load)	0.08Max. (450 g-load)

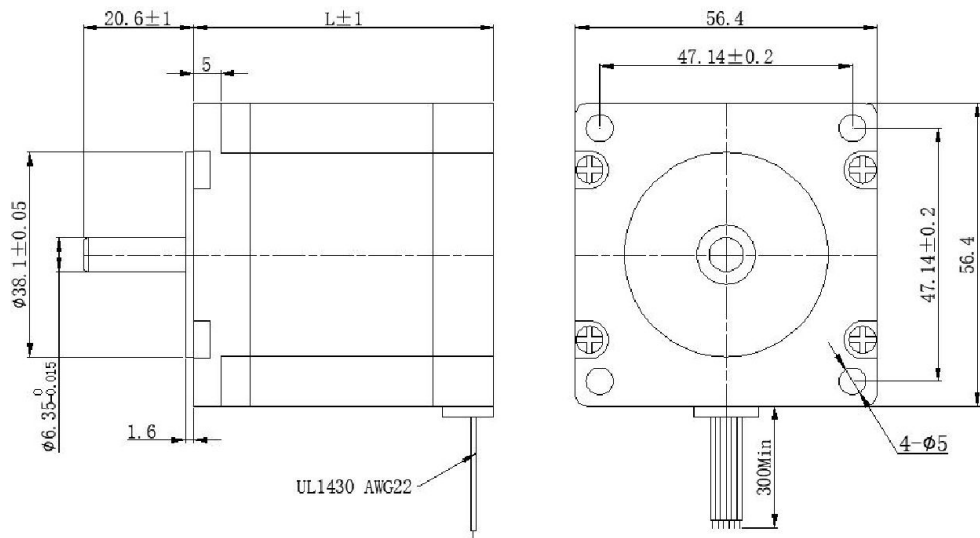
- Specification:

Model	Rated Voltage	Current	Resistance	Induction	Holding Torque	Number of Lead	Rotor Inertia	Weight	Length
	V	A	Ω	mH	g. cm		g-cm2	Kg	mm
STM5741V2.8-ST	2.8	2	1.4	2.2	3.9	6	120	0.47	41
STM5741V2-ST	2	2.8	0.7	2.2	5.5	4	120	0.47	41
STM5756V3.6-ST	3.6	2	1.8	4.5	9	6	300	0.7	56
STM5756V2.5-ST	2.5	2.8	0.9	4.5	12.6	4	300	0.7	56
STM5776V4.5-ST	4.5	2	2.25	5.6	13.5	6	480	1	76
STM5776V3.2-ST	3.2	2.8	1.13	5.6	18.9	4	480	1	76

Hybrid Stepper Motor

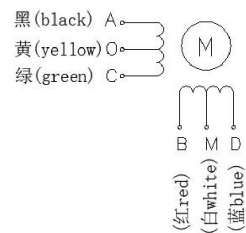
Ø57mm

• Dimension:

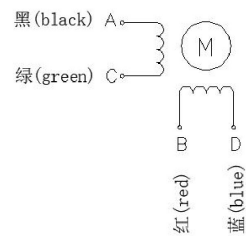


• Wiring:

6线 (6 leads)

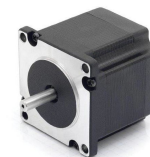


4线 (4 leads)



Hybrid Stepper Motor

Ø35mm - B Type



- Description:

Step Angle	Step Angle Accuracy	Resistance Accuracy	Inductance Accuracy	Temperature Rise	Ambient Temperature	Insulation Resistance	Dielectric Strength	Shaft Radial Play	Shaft Axial Play
1.8°	±5% (full step, no load)	±10% @20°C	±20% @1kHz	80°C Max. (rated current)	-20°C~+50°C	100MΩMin. ,500VDC	500VAC for one minute	0.02Max. (450 g-load)	0.08Max. (450 g-load)

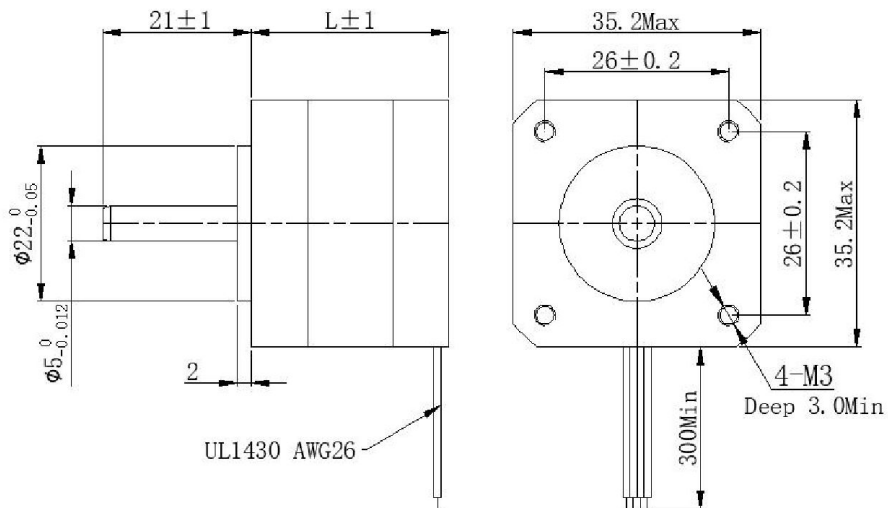
- Specification:

Model	Rated Voltage	Current	Resistance	Induction	Holding Torque	Number of Lead	Rotor Inertia	Weight	Length
	V	A	Ω	mH	g. cm		g-cm2	Kg	mm
STM3526V3.8-ST2	3.8	0.8	4.8	4.3	800	4	10	0.12	26
STM3528V10-ST2	10	0.5	20	18	1000	4	10	0.14	28
STM3536V2.7-ST2	2.7	1	2.7	4.3	1400	4	14	0.18	36

Hybrid Stepper Motor

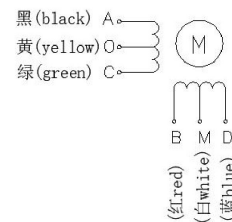
Ø35mm - B Type

• Dimension:

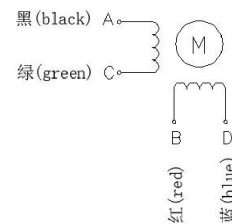


• Wiring:

6线 (6 leads)

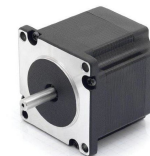


4线 (4 leads)



Hybrid Stepper Motor

Ø42mm - B Type



- Description:

Step Angle	Step Angle Accuracy	Resistance Accuracy	Inductance Accuracy	Temperature Rise	Ambient Temperature	Insulation Resistance	Dielectric Strength	Shaft Radial Play	Shaft Axial Play
1.8°	±5% (full step, no load)	±10% @20°C	±20% @1kHz	80°C Max. (rated current)	-20°C~+50°C	100MΩMin. ,500VDC	500VAC for one minute	0.02Max. (450 g-load)	0.08Max. (450 g-load)

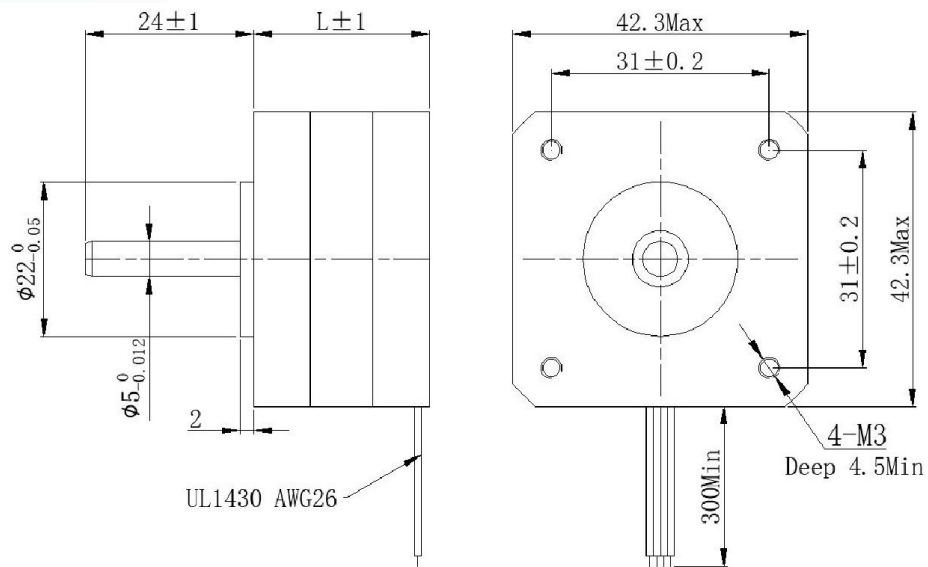
- Specification:

Model	Rated Voltage	Current	Resistance	Induction	Holding Torque	Number of Lead	Rotor Inertia	Weight	Length
	V	A	Ω	mH	g. cm		g-cm2	Kg	mm
STM4234V4-ST2	4	0.95	4.2	2.5	1500	6	35	0.22	34
STM4234V2.8-ST2	2.8	1.33	2.1	2.5	2200	4	35	0.22	34
STM4240V4-ST2	4	1.2	3.3	3.2	2600	6	54	0.28	40
STM4240V2.8-ST2	2.8	1.68	1.65	3.2	3600	4	54	0.28	40
STM4247V4-ST2	4	1.2	3.3	2.8	3200	6	68	0.35	47
STM4247V2.8-ST2	2.8	1.68	1.65	2.8	4400	4	68	0.35	47

Hybrid Stepper Motor

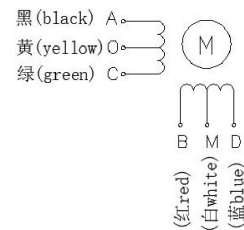
Ø42mm - B Type

• Dimension:

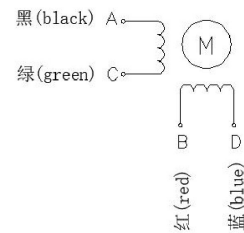


• Wiring:

6线 (6 leads)

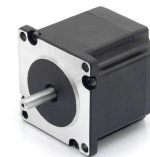


4线 (4 leads)



Hybrid Stepper Motor

Ø57mm - B Type



Description:

Step Angle	Step Angle Accuracy	Resistance Accuracy	Inductance Accuracy	Temperature Rise	Ambient Temperature	Insulation Resistance	Dielectric Strength	Shaft Radial Play	Shaft Axial Play
1.8°	±5% (full step, no load)	±10% @20°C	±20% @1kHz	80°C Max. (rated current)	-20°C~+50°C	100MΩMin. ,500VDC	500VAC for one minute	0.02Max. (450 g-load)	0.08Max. (450 g-load)

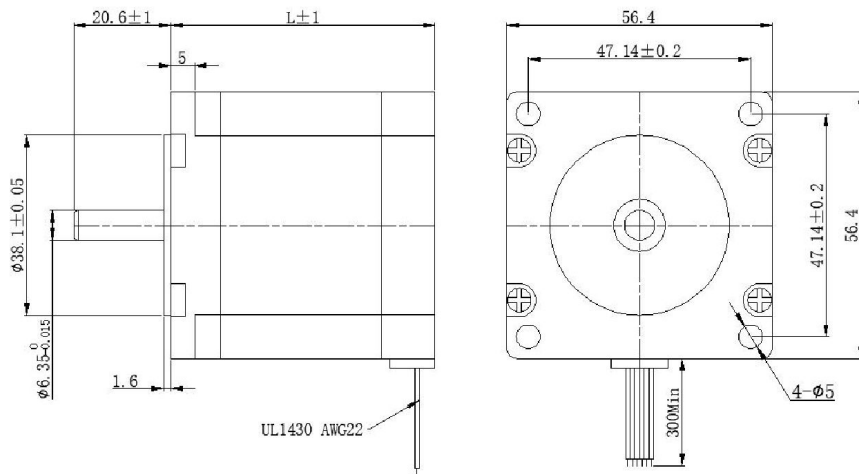
Specification:

Model	Rated Voltage	Current	Resistance	Induction	Holding Torque	Number of Lead	Rotor Inertia	Weight	Length
	V	A	Ω	mH	g. cm		g-cm2	Kg	mm
STM5741V2.8-ST2	2.8	2	1.4	1.4	3.9	6	120	0.47	41
STM5751V2.3-ST2	2.3	2.8	0.83	2.2	10.1	4	275	0.65	51
STM5756V3.6-ST2	3.6	2	1.8	2.5	9	6	300	0.7	56
STM5756V2.5-ST2	2.5	2.8	0.9	2.5	12.6	4	300	0.7	56
STM5776V4.5-ST2	4.5	2	2.25	3.6	13.5	6	480	1	76
STM5776V3.2-ST2	3.2	2.8	1.13	3.6	18.9	4	480	1	76

Hybrid Stepper Motor

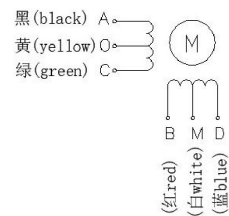
Ø57mm - B Type

• Dimension:

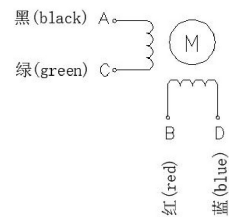


• Wiring:

6线 (6 leads)



4线 (4 leads)





Change is a perpetual motion

Phone: +886-7-215-0001

Mobile: +886-938-016696

E-mail: service@cainton.com

Address: 9F.-1, No. 171,
Bizhong St., Yancheng Dist.,
Kaohsiung City 803002, Taiwan (R.O.C.)

www.cainton.com